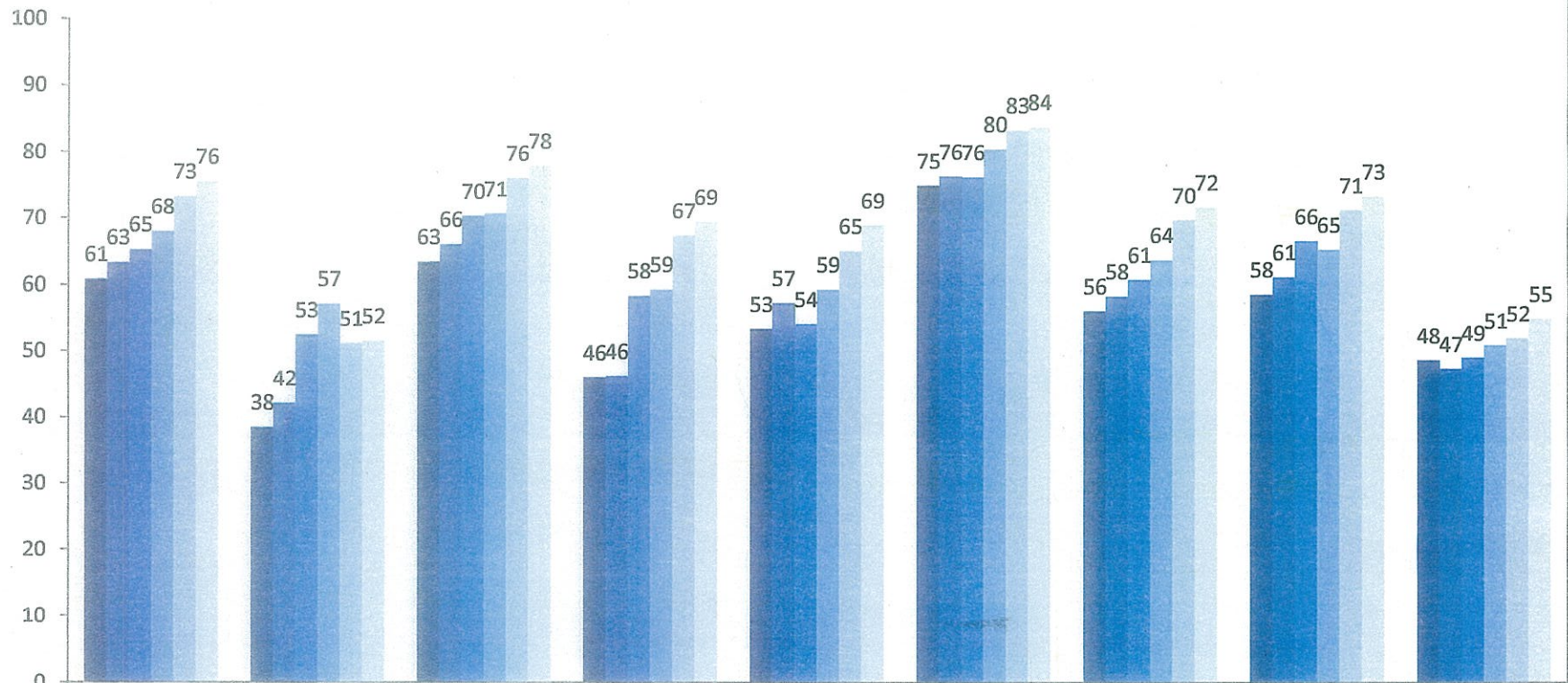


SPPS: 4-Year Graduation Rate: 2009-2014



	All Students	American Indian/Alaskan Native	Asian/Pacific Islander	Hispanic	Black, not of Hispanic origin	White, not of Hispanic origin	Free/Reduced Priced Lunch	Limited English Proficient	Special Education
■ 2009	61	38	63	46	53	75	56	58	48
■ 2010	63	42	66	46	57	76	58	61	47
■ 2011	65	53	70	58	54	76	61	66	49
■ 2012	68	57	71	59	59	80	64	65	51
■ 2013	73	51	76	67	65	83	70	71	52
■ 2014	76	52	78	69	69	84	72	73	55